

## Duoplan conveyors



## One type for multiple use

Due to the basic intelligent design of the Duoplan conveyors, these can be used as both separate transport conveyors and as a part of the cutting systems in the form of accumulating conveyors, laydown conveyors, etc.

Another advantage is with maintenance and service, even if malfunction and break down occur. When using the same conveyor system throughout the whole slaughter line, both know how and time for maintenance/service are limited and effortless, resulting in low investment in spare parts stock.

### Hygiene

The design of the Duoplan conveyors comply with the strictest hygiene demands by providing easy access for effective manual cleaning.

### Options

The conveyor body is made of hot-dipped galvanized steel and is available with ordinary or non-fric slide rail of tube or flat-bar type.

For viscera inspection, the conveyor body is made of stainless steel in an enclosed shape to protect the chain.

### Why the Duoplan conveyors!

- Same conveyor type for multiple transport jobs, horizontally and vertically
- Low investment in spare parts stock
- Low maintenance costs
- Quick and effortless service during malfunction or break down
- Easy access for manual cleaning



## Safety and legal requirements

Duoplan conveyors are CE approved and designed to meet the strictest demand on health and safety.

## Technical data

Capacity	Max. velocity per second 0.4 m/sec, 19.68 in/sec
----------	---

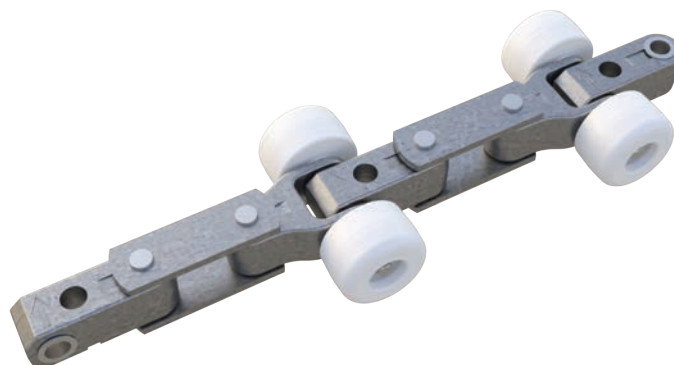
Max. load	35 kN
-----------	-------

Dimensions	Dependent on required length and application
------------	--

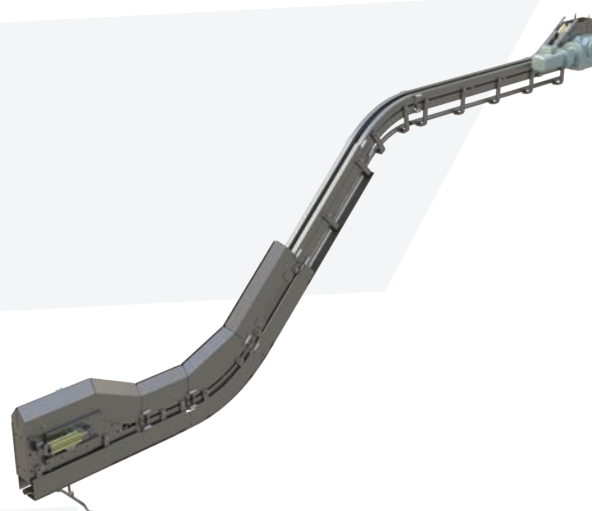
Consumption	
-------------	--

Power supply	Standard 400V/50Hz/3P Other voltages and frequencies are available on request
--------------	--

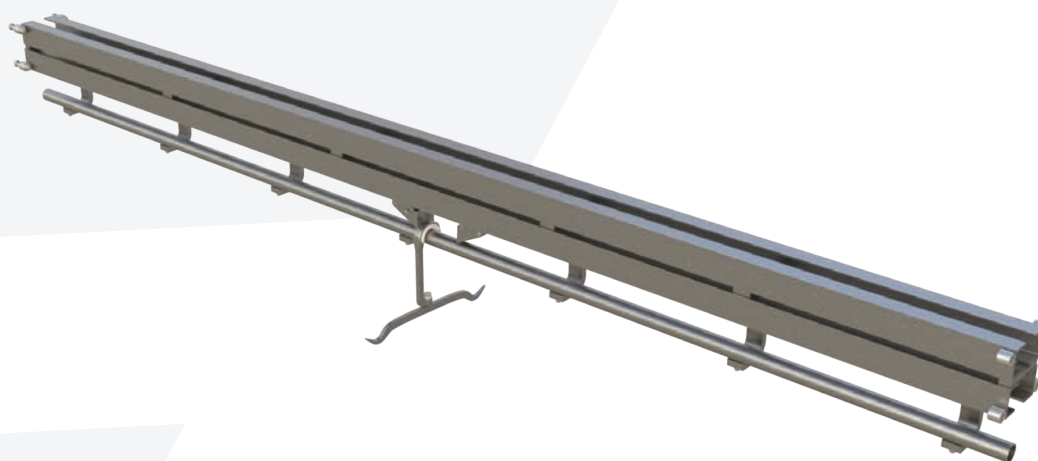
Technical data may be subject to changes



The chain consists of cardan joints making both horizontal and vertical movements possible



Duoplan elevator



Duoplan conveyor with gambrel

## Contact

CN: shanghai@frontmatec.com  
Phone: +86 215 859 4850

DK: kolding@frontmatec.com  
Phone: +45 763 427 00

NL: rijssen@frontmatec.com  
Phone: +31 886 294 000

UK: birmingham@frontmatec.com  
Phone: +44 121 313 3564

[frontmatec.com](http://frontmatec.com)

DE: beckum@frontmatec.com  
Phone: +49 252 185 070

ES: barcelona@frontmatec.com  
Phone: +34 932 643 800

RU: moscow@frontmatec.com  
Phone: +7 495 424 9559

US: kansascity@frontmatec.com  
Phone: +1 816 891 2440